

GOOGLE MAPS HACKS

*Tips and Tools for Geographic
Searching and Remixing*



O'REILLY®

Rich Gibson & Schuyler Erle

Google Maps Hacks™

by Rich Gibson and Schuyler Erle

Copyright © 2006 O'Reilly Media, Inc. All rights reserved.
Printed in the United States of America.

Published by O'Reilly Media, Inc., 1005 Gravenstein Highway North,
Sebastopol, CA 95472.

O'Reilly books may be purchased for educational, business, or sales promotional use. Online editions are also available for most titles (*safari.oreilly.com*). For more information, contact our corporate/institutional sales department: (800) 998-9938 or *corporate@oreilly.com*.

Editor: Simon St.Laurent
Production Editor: Jamie Peppard
Copyeditor: Derek Di Matteo
Indexer: Nancy Crompton

Cover Designer: Marcia Friedman
Interior Designer: David Futato
Cover Illustrator: Karen Montgomery
Illustrators: Robert Romano, Jessamyn
Read, and Lesley Borash

Printing History:

January 2006: First Edition.

Nutshell Handbook, the Nutshell Handbook logo, and the O'Reilly logo are registered trademarks of O'Reilly Media, Inc. The *Hacks* series designations, *Google Maps Hacks*, the image of an antique globe, and related trade dress are trademarks of O'Reilly Media, Inc.

Many of the designations used by manufacturers and sellers to distinguish their products are claimed as trademarks. Where those designations appear in this book, and O'Reilly Media, Inc. was aware of a trademark claim, the designations have been printed in caps or initial caps.

While every precaution has been taken in the preparation of this book, the publisher and authors assume no responsibility for errors or omissions, or for damages resulting from the use of the information contained herein.

Small print: The technologies discussed in this publication, the limitations on these technologies that technology and content owners seek to impose, and the laws actually limiting the use of these technologies are constantly changing. Thus, some of the hacks described in this publication may not work, may cause unintended harm to systems on which they are used, or may not be consistent with applicable user agreements. Your use of these hacks is at your own risk, and O'Reilly Media, Inc. disclaims responsibility for any damage or expense resulting from their use. In any event, you should take care that your use of these hacks does not violate any applicable laws, including copyright laws.



This book uses RepKover™, a durable and flexible lay-flat binding.

ISBN: 0-596-10161-9
[M]

[5/06]

This excerpt is protected by copyright law. It is your responsibility to obtain permissions necessary for any proposed use of this material. Please direct your inquiries to permissions@oreilly.com.

HACK
#45

Share Pictures with Your Community

Use Flickrcity to set up a collaborative photo map.

Putting geolocated photos on a map is something geo-hackers have worked on for a long time. Now, using Flickr, Google Maps, and a little piece of glue called Flickrcity (<http://anti-mega.com/flickrcity/>), anyone can do this easily.

I started work on Flickrcity because I wanted to create a restaurant review site for Helsinki that anyone could contribute to. Flickr was the natural place to store photos and information; sites such as Geobloggers (<http://www.geobloggers.com/>) were using Flickr as a data source and had already created a standard for geotagging photos.

Flickrcity automatically filters on a tag of the name of the city and the tag *geotagged*. Using additional tags, or specifying a particular user, you can use Flickrcity for a variety of purposes.

To see all geotagged photos in a city, you can just go to the URL of the Flickrcity installation—e.g., for Helsinki, <http://anti-mega.com/flickrcity/helsinki.city>, as shown in Figure 5-15.

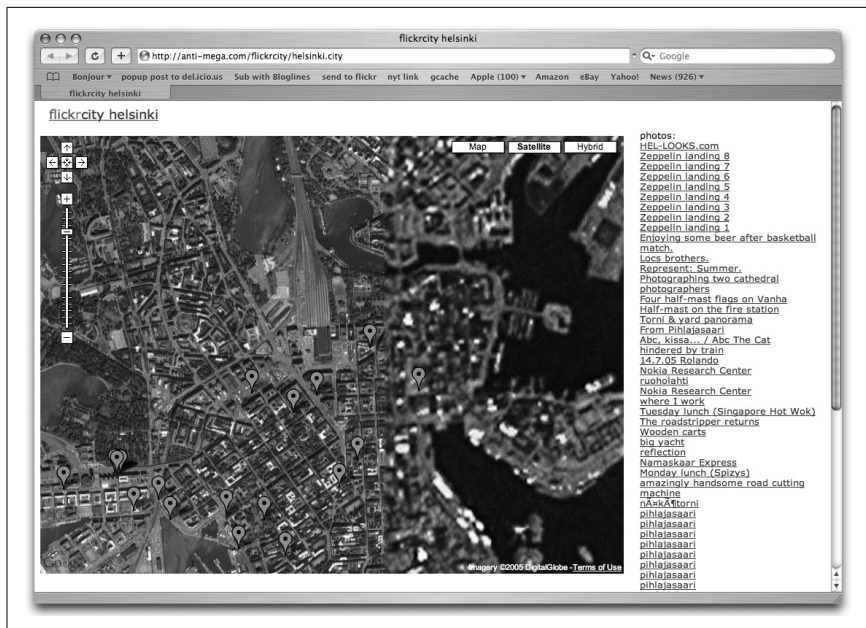


Figure 5-15. Photos geotagged in Helsinki

If you wanted to set up a collaborative restaurant review site for Helsinki, you would need to tag photos in Flickr with, say, “helsinki,” “food,” “geotagged,”

and the two location geotags [Hack #46]. Then you would construct a URL that would return these images with this tag query, such as <http://anti-mega.com/flickrcity/helsinki.city?tags=food>. Figure 5-16 shows what this looks like.



Figure 5-16. Photos tagged with food in Helsinki

If you just wanted to see all of my Helsinki photos, you would use a user query such as <http://anti-mega.com/flickrcity/helsinki.city?user=chrisdodo>, as Figure 5-17 demonstrates.

Of course, you can combine the two, to show just my food photos, as in <http://anti-mega.com/flickrcity/helsinki.city?tags=food&user=chrisdodo>.

If you're using the map for yourself, use a different tag for each project you want to create. If you want to set up a collaborative map, pick a tag name that isn't being used in Flickr and tell all your photographers to add that tag. Of course, others may see it and start using the tag too—Flickrity gets even better with more geotagged photos.

I've set up Flickrity installations for a few cities, and others have set up even more, but you can also download the code and set up Flickrity for wherever you want. To do this, you will need a web server with Perl, some Perl modules (see the installation instructions on the web page for the list), and a little bit of webmaster knowledge.

You will need to change a few things in the script (mainly the name of the city and the default Google map coordinates and zoom level), and a directory on

