

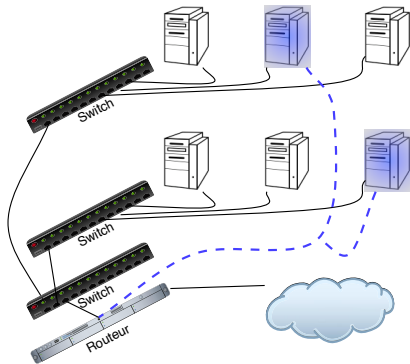
Virtual LANs

Martin Heusse



VLAN

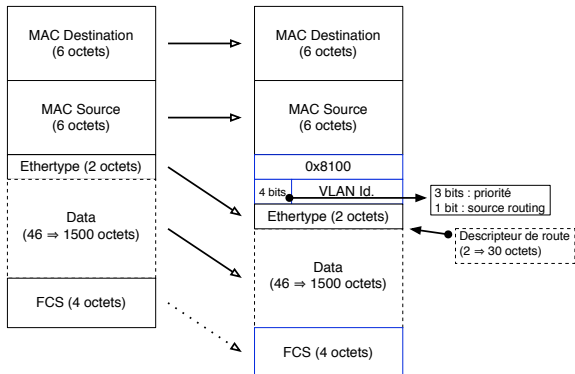
- Accommodate several distinct L3 networks on a L2 switch



- Association frame/VLAN
 1. Incoming port
 2. MAC address
 3. L3 protocol / IP address

VLAN (cont.)

- If several VLANs share a given link (= trunk) \Rightarrow frame tagging
802.1q



- MTU may be problematic...
- What path does a packet follow to go from a blue station to a white station on the example above?